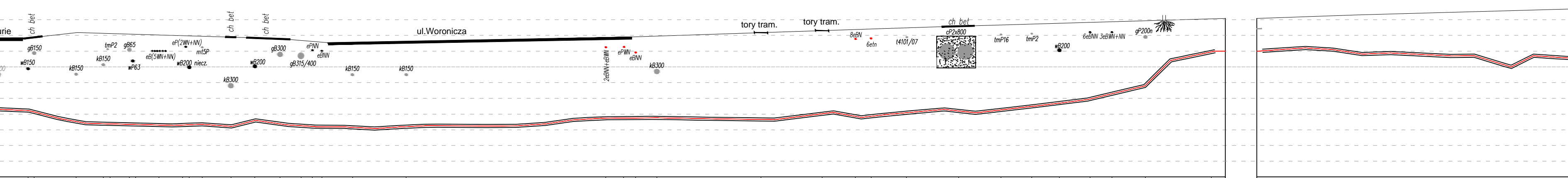
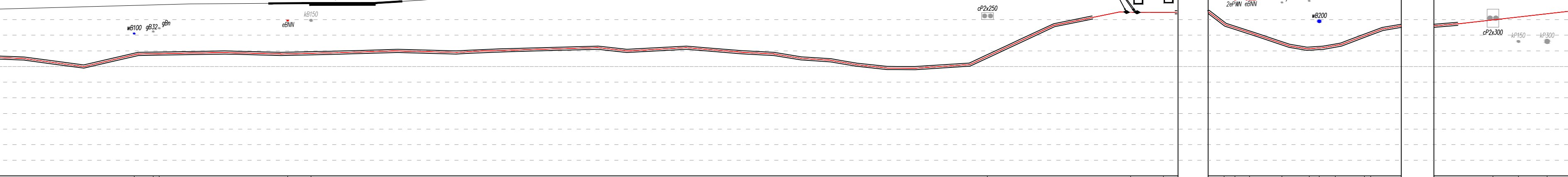
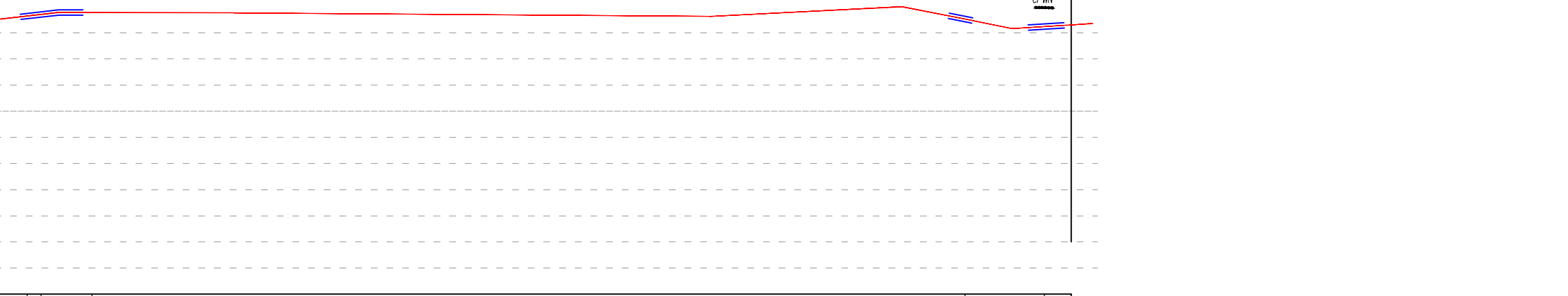
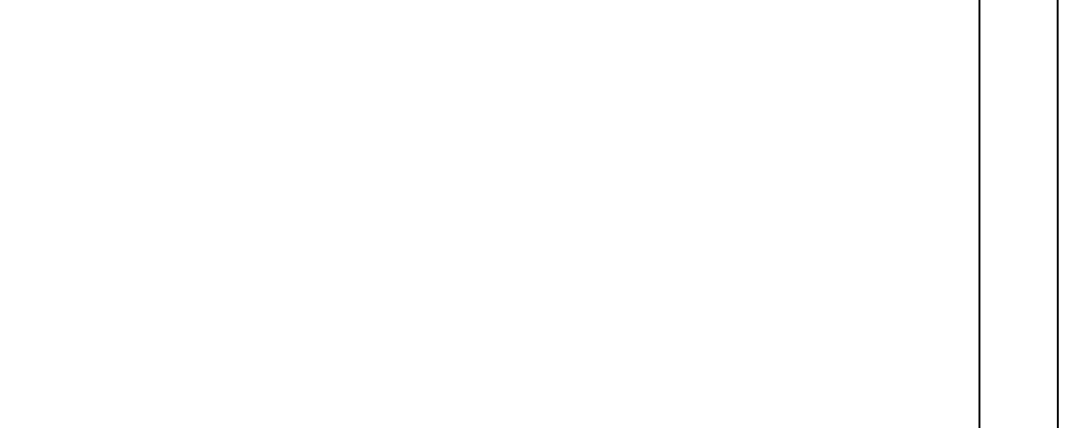
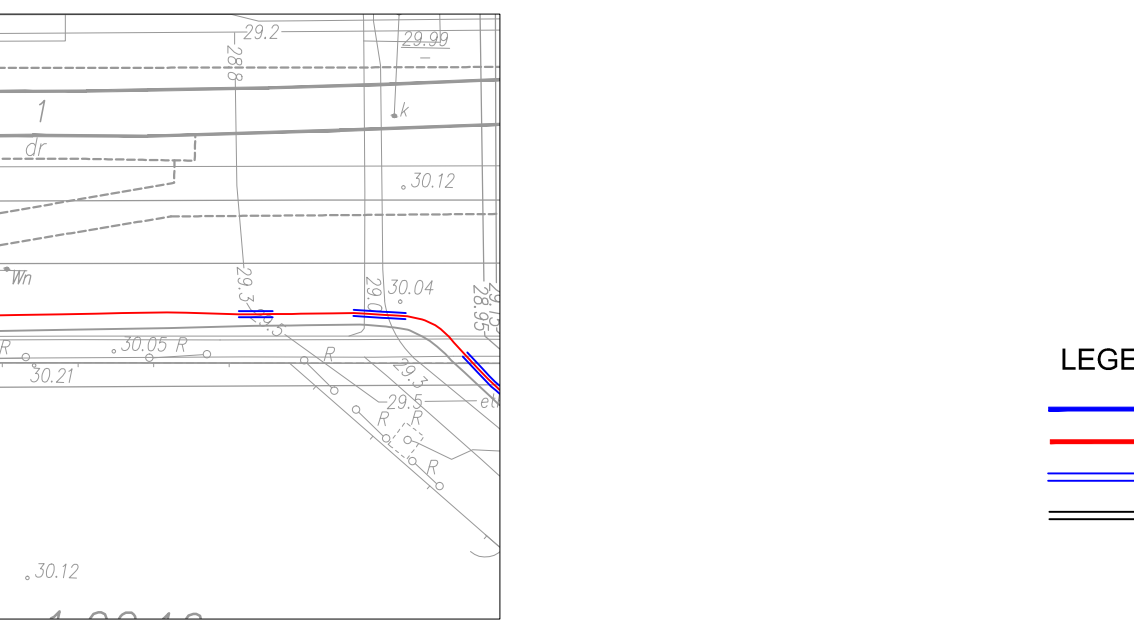
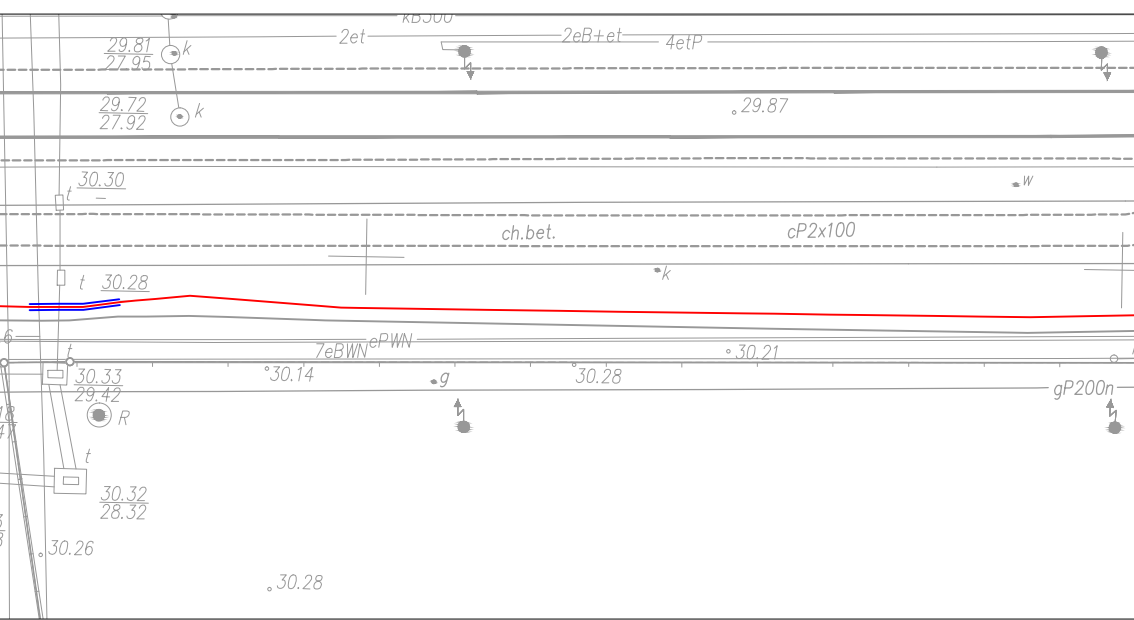
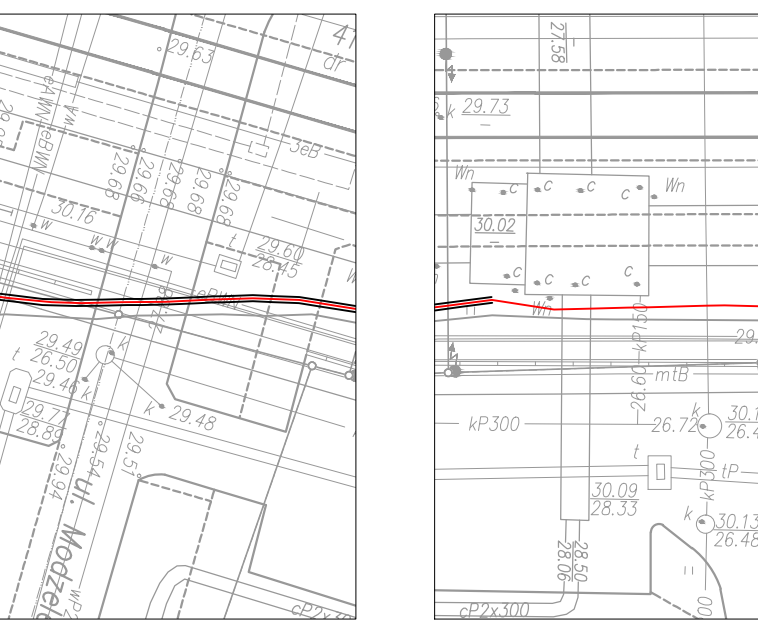
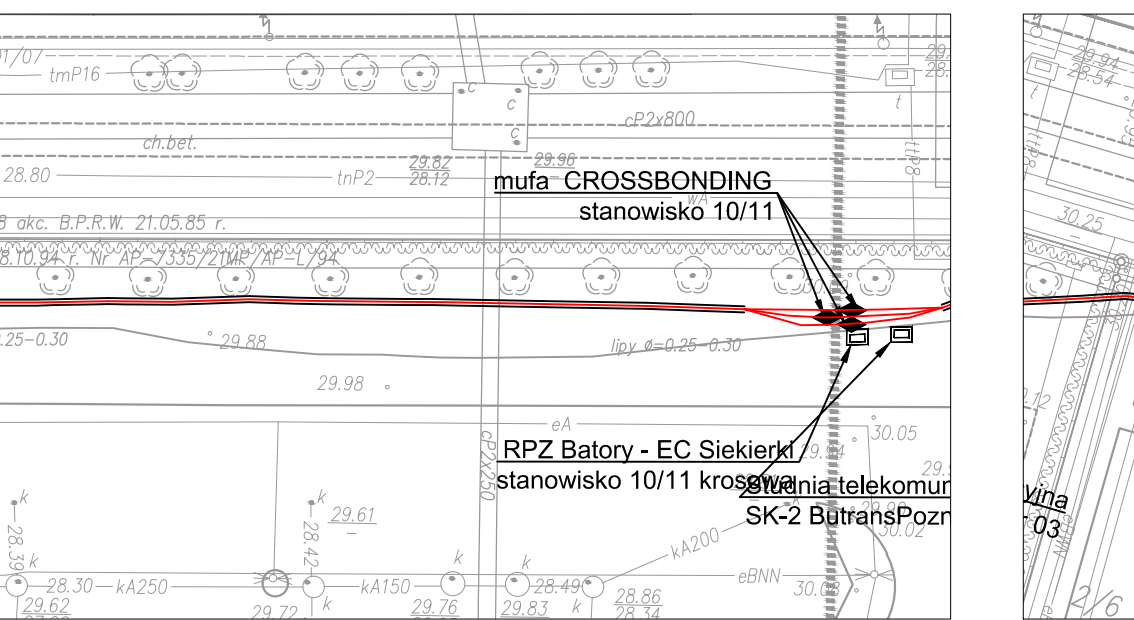
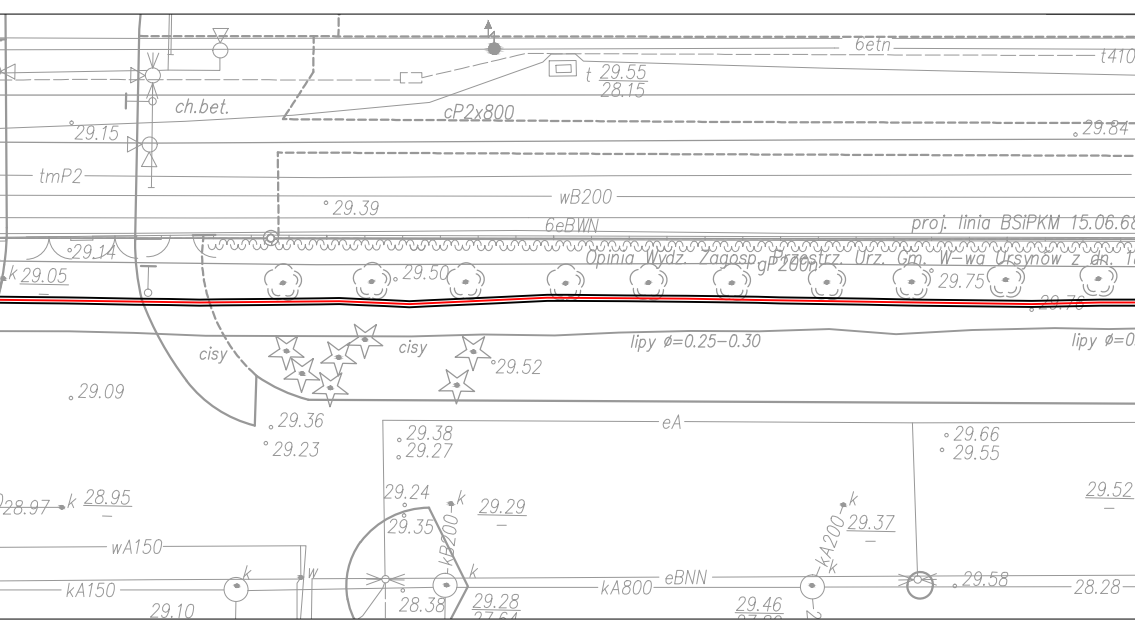
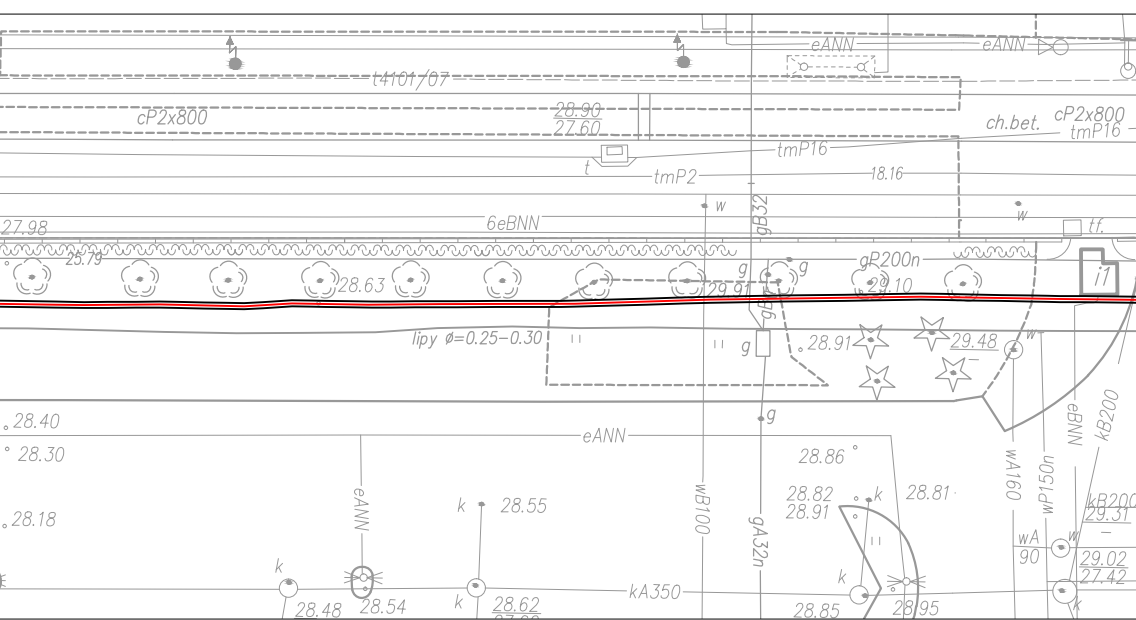
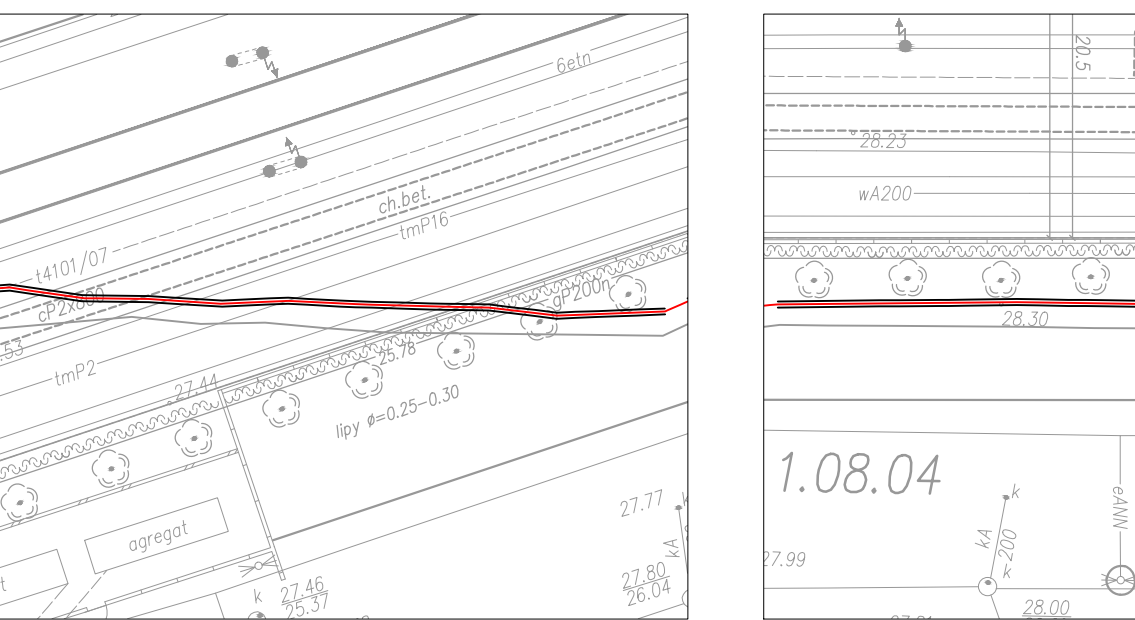
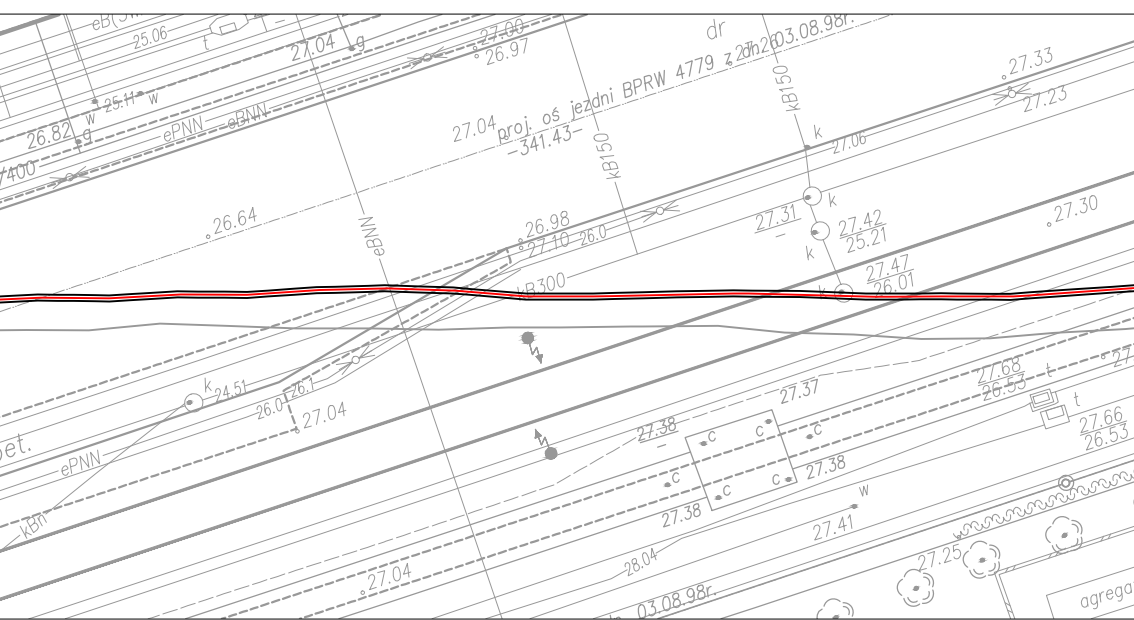
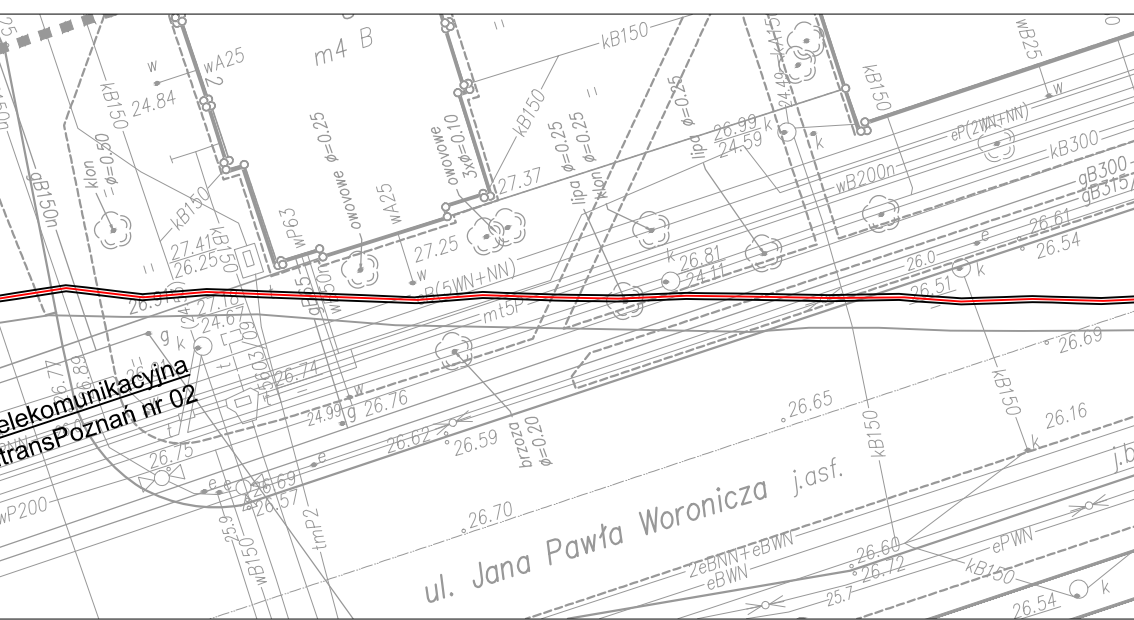
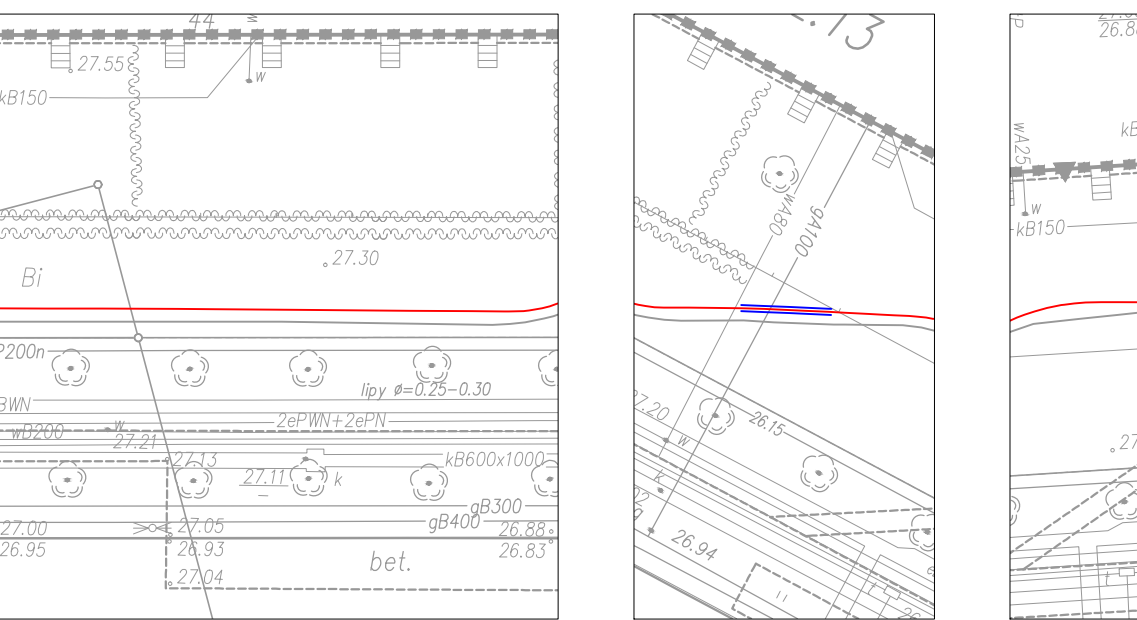
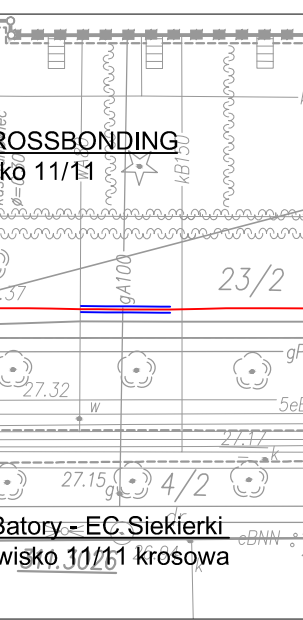
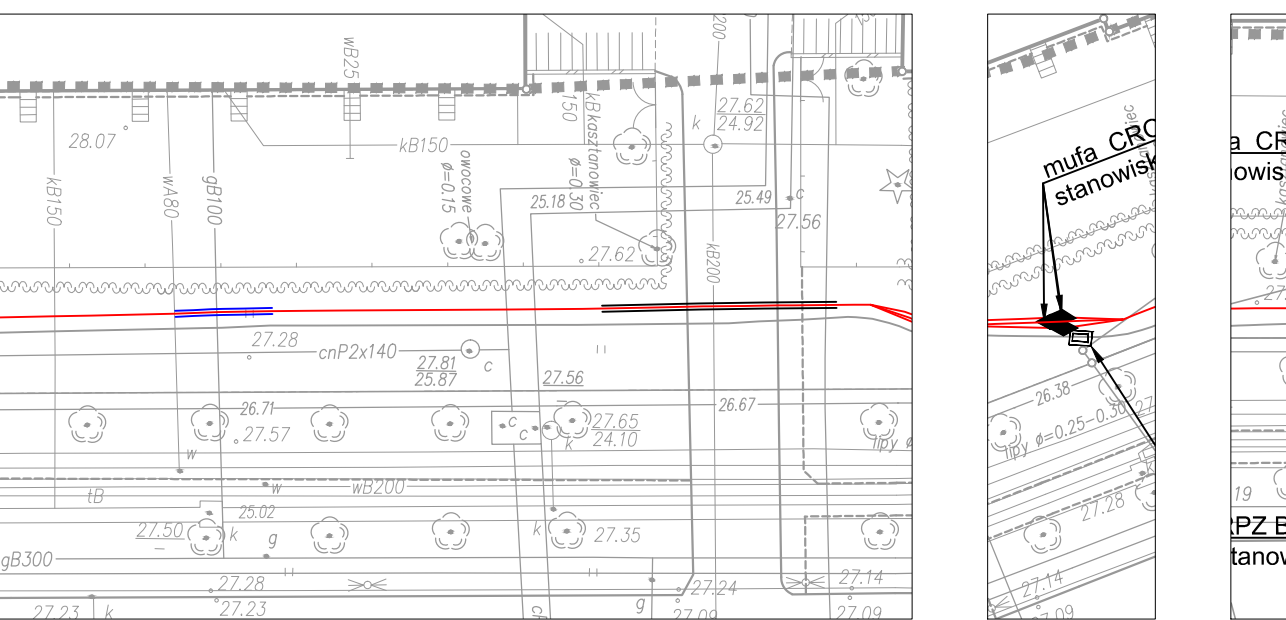




[illegible][illegible][illegible][illegible][illegible]

LEGENDA:

-  Linia kablowa światłowodowa
-  Linia kablowa 110 kV
-  Rury osłonowe DVK
-  Przecisk/przewiert w rurach osłonowych ORG Q-SYSTEM

		3				Tytuł op. BUDOWA DWUTOROWEJ LINII KABLWEJ WRAZ Z TRAKTEM SWIATLOWODOWYM	
Siedziba Firmy: Kancel. Ławeczko 95 21-1001 Legnica 00-00-00-94 REGON 40266467 tel. 071 880 18 93		5				Nazwa wykonawcy: PROFIL PODUŻYNY LINII KABLWEJ 110KV RPT. Batary – CP. Siedlisk	
Podpiszcie: 1:2000/1:500		6		02 07 2017		Nr rys.: E 08	
Nr. ewizji		Data wykonania Sprawdził		02 07 2017		Rys. 0 Arkusz 03 Izuk 12	
Nr. op.		Podpis		Objekt: Linia kablowa 110 KV		Zamawiający: Szwed. operator Ośrodek S.p. z o.o.	
						Studium Format	